



## Weir Farm National Historical Park Announces the 2023 Artists-in-Residence

### 2023 Weir Farm Artist-in-Residence Program *Artist Announcement*

**Wilton, CT** – Weir Farm National Historical Park is pleased to announce six artists selected for the 2023 Artist-in-Residence Program.

May - [Amanda Parry Oglesbee](#); Public Open Studio Program May 20 from 10:30a-12:00p  
June - [Diego Juarez](#); Public Open Studio Program June 17 from 10:30a-12:00p  
July - [Todd Bartel](#); Public Open Studio Program July 22 from 10:30a-12:00p  
August - [Andree Brown](#); Public Open Studio Program August 19 from 10:30a-12:00p  
September - [Erin Treacy](#); Public Open Studio Program September 23 from 10:30a-12:00p  
October - [Victoria van der Laan](#); Public Open Studio Program October 28 from 10:30a-12:00p

Artists will spend time in and around [Weir Farm National Historical Park](#) to inspire their creations for the duration of the residency. Each artist will spend 4 weeks living on-site in the [Cottage](#) and using the state-of-the-art [Artist's Studio](#).

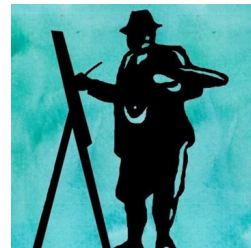
Nationwide, more than 50 National Park Service sites host artist residency programs. Weir Farm has inspired thousands of artists for more than 140 years, including over 250 Artists-in-Residence.

The call for applications to participate in the Artist-in-Residence program in 2024 will be open from **November 1, 2023, to January 31, 2024**

### Thank You Park Partners and Jurors!

This program is supported by the generosity of Park partners. The [Weir Farm Art Alliance](#) plays a critical role in coordinating artist applications, assisting with the jury process, promoting artists during their residency, and managing the alumni program, and the [Friends of Weir Farm](#) will host public open studio programs and help the park to welcome each artist in 2023.

This year the program received 161 applications in varied visual art mediums, of which six artists were selected by a panel of three jurors. The Park extends sincere gratitude to jurors Nina Buxenbaum, Christopher Shore, and Pamela Hovland for their expertise and time to select this year's cohort of Artists-in-Residence.



**FRIENDS  
OF  
WEIR  
FARM**

### About the Jurors

[Nina Buxenbaum](#) was born and raised in the Crown Heights neighborhood of Brooklyn, NY to a politically active, multi-racial household. She received her MFA degree in Painting from the Maryland Institute College of Art and her BFA from Washington University in St. Louis in Drawing and Printmaking. She is a Full Professor at York College, CUNY, in Jamaica, NY, in the Department of Performing and Fine Arts as well as a member of the Silvermine Guild of Artists in New Canaan, CT. Ms. Buxenbaum is a founding member of the KINDRED Creative Residence & Agro-Forest in Fletcher, VT, an inclusive community based on democratic principles and sustainability, integrating the creative arts and environmental studies, through project/place based education. She maintains an active studio practice in Brooklyn, NY and Bethel, CT.

[Christopher Shore](#) is an artist printmaker who lives and works in the Greater New York area. He received an MFA from the Pratt Institute (Brooklyn) in 2001 with a concentration in printmaking. His work has been exhibited in numerous group shows throughout Tri-State Area and in venues around the world including the Katonah Museum of Art (NY), the University of Richmond Museum (VA), the Southampton Arts Center (NY), and recently in the 9th Duoro Biennial Print Exhibition in Portugal. Christopher is currently the Staff Master Printer at the Center for Contemporary

Printmaking in Norwalk, CT where he works as an instructor and collaborative printer, working with internationally renowned artists as well as emerging and established artists. Many of these collaborations have had been showcased in prestigious galleries, exhibitions and museums, often winning awards and recognition.

Pamela Hovland is a designer, educator, writer and visual activist. From studios in New York and Connecticut, she has worked extensively in the areas of identity, print communications, signage and screen-based design for corporations, nonprofit organizations, cultural institutions and individuals. Her work has been recognized by the AIGA, Emigre, Eye, I.D., Mass MoCA, Jan Van Eyck Academie, Print, Type Directors Club, etc., and has been included in regional, national and international exhibitions. Pamela received an MFA from Yale University where she is a Senior Critic in graphic design. She is a Fellow of the American Academy in Rome and a founding member of Class Action Collective, the art collective that uses design to effect social change.

---

### **About Weir Farm Art Alliance**

Weir Farm Art Alliance (WFAA) preserves, sustains, and promotes the legacy of American Impressionist painter Julian Alden Weir. The WFAA honors Weir and the continued generations of artists inspired by Weir Farm, most notably sculptor Mahonri Young and landscape painters Sperry and Doris Andrews. WFAA is a private, non-profit organization that is the philanthropic partner of the Weir Farm National Historical Park.

### **About Weir Farm National Historical Park**

Weir Farm National Historical Park is a National Park for Art, a place that has been inspiring artists since 1882 when America's most beloved Impressionist, Julian Alden Weir, made this his summer home. Today, artists and visitors of all ages come to the park to enjoy the stunning landscape, walk in the footsteps of American masters, and create art!

[Learn More](#)

Weir Farm Art Alliance | 735 Nod Hill Rd. Wilton, CT | [weirfarmartalliance.org](http://weirfarmartalliance.org)

